



OKLAHOMA

WEEK 3 - NO. 2 OKLAHOMA AT NO. 25 ILLINOIS

7 P.M. (CT) | Huff Hall | Champaign, Ill.



Live Stats: www.fightingillini.com
 Web cast www.fightingillini.com
 Series Record OU leads, 6-0
 Last Meeting 2009 NCAA Championship
 Tickets 1-866-ILLINI-1



OKLAHOMA SOONERS (2-0, 0-0 BIG 12)

2010 TROESTER RANKINGS
 Team: 196.275 (2nd)
 Vault: 49.000 (11th) | Bars: 49.200 (1st)
 Beam: 49.025 (1st) | Floor: 49.050 (5th)

ILLINOIS FIGHTING ILLINI (3-2, 1-0 BIG TEN)

2010 TROESTER RANKINGS
 Team: 193.112 (25th)
 Vault: 48.687 (20th) | Bars: 48.325 (27th)
 Beam: 47.925 (29th) | Floor: 48.175 (31st)

AT A GLANCE:

The second-ranked OU women's gymnastics squad continues its current three-meet road stand at No. 25 Illinois on Saturday, Jan. 23. The top-25 battle marks OU's first trip to Champaign, Ill., in program history and commences at 7 p.m. (CT) inside Huff Hall in the Fighting Illini's home opener. Illinois is the third-straight top-25 opponent for the Sooners to start their 2010 campaign. Oklahoma is 6-0 all-time against the Fighting Illini.

OU remained at No. 2 in Monday's weekly Troester rankings after its victory at ninth-ranked Auburn on Jan. 15, but gained ground on top-ranked UCLA. The Sooners hold a season average of 196.275, less than a tenth of a point behind the Bruins (196.362).

Oklahoma has been one of the most consistent teams in the country during the first two weeks of competition, hitting 47-of-48 routines en route to back-to-back wins over top-10 opponents. The early success can be attributed to stellar performances on bars and beam, where the Sooners are currently ranked first in the country on each apparatus. OU's season average on the uneven bars is a 49.200, while the beam squad has posted a mark of 49.025 through two events. OU is a perfect 24-of-24 on these two events heading into the third week of competition.

Individually, Hollie Vise holds top-five national rankings on bars (No. 4 - 9.887) and beam (No. 2 - 9.887), while Megan Ferguson is ranked fourth on beam (9.875).

DATE	OPPONENT	LOCATION	TIME/RESULT
1.8	FLORIDA	LLOYD NOBLE CENTER	(W) 196.250-195.275
1.15	@ Auburn	Auburn, Ala.	(W) 196.300-195.325
1.23	@ Illinois	Champaign, Ill.	7 p.m.
1.30	Metroplex Challenge	Dallas, Texas	7 p.m.
2.5	NEBRASKA / TWU	LLOYD NOBLE CENTER	7 P.M.
2.12	IOWA STATE	LLOYD NOBLE CENTER	7 P.M.
2.19	@ Missouri	Columbia, Mo.	6:30 p.m.
2.26	@ Michigan State	East Lansing, Mich.	6 p.m.
3.5	ALABAMA	LLOYD NOBLE CENTER	7 P.M.
3.12	WASHINGTON	LLOYD NOBLE CENTER	7 P.M.
3.19	@ Arkansas	Fayetteville, Ark.	7 p.m.
3.27	Big 12 Championships	Lincoln, Neb.	2 p.m.
4.10	NCAA Regionals	TBA	TBA
4.22-24	NCAA Championships	Gainesville, Fla.	TBA

Phillip Rogers, Women's Gymnastics Communications
 180 W. Brooks, Suite 2525, Norman, OK 73019
 O: (405) 325-8413 | C: (405) 880-0794 | F: (405) 325-7623
philliprogers@ou.edu | www.SoonerSports.com

ON THE WEB

OU's home meets can be seen via a live web cast with commentary from Sooner All-American Kasie Tamayo and Ashley Alden on Oklahoma All-Access, SoonerSports.com's premium site. Live stats for all meets can be found on SoonerSports.com.

TICKETS

For home meet tickets, call (405) 325-2424 or toll-free (800) 456-GoOU. Tickets can also be purchased at the main ticket office in Gaylord Family-Oklahoma Memorial Stadium or at Lloyd Noble Center on the day of the meet.

PRACTICE POLICY

Practices have resumed at the Sam Viersen Center, directly north and across the street (Imhoff) from the Lloyd Noble Center. Practices are typically open to media. However, those who wish to attend must obtain clearance through Phillip Rogers in the OU Athletics Communications Office prior to the start of practice. Practice generally runs from 10:30 a.m. to 2:30 p.m. The best time to conduct interviews is immediately following practice.

CREDENTIAL REQUESTS

Media credentials for home contests at the Lloyd Noble Center should be requested no later than one day prior to the event. All requests should be directed to Phillip Rogers in the Communications Office at (405) 325-8413 or by e-mail to philliprogers@ou.edu.

POST-MEET INFORMATION

Post-meet interviews will take place on the main floor of the Lloyd Noble Center after head coach K.J. Kindler dismisses her athletes. Official score sheets will be available at the scorer's table.

MEDIA INTERVIEWS

Non-postmeet interview requests for athletes and coaches must be arranged through Phillip Rogers in the Athletics Communications Office. All requests should be submitted at least one day in advance of the desired interview time.



The official site of OU Athletics supplies Sooner fans worldwide with the latest news and features on Oklahoma athletics direct from Norman. The site provides the latest press releases, rosters, bios, schedules, statistics, notes, quotes and photo galleries available to both Sooner fans and the media.

NAME	HEIGHT	YEAR	HOMETOWN (HIGH SCHOOL)	CLUB	PRONUNCIATION
Cindell, Candace	5-5	Jr.	Frisco, Texas (Frisco HS)	Kurt Thomas Gymnastics	sin-DELL
Ferguson, Megan	4-11	So.	Olathe, Kan. (Blue Valley HS)	Eagles Gymnastics	
Flanery, Jacqueline	5-5	Sr.	Plattsburg, Mo. (Plattsburg HS)	Eagles Gymnastics	
Kelley, Natasha	5-4	R-Fr.	Katy, Texas (Home schooled)	Cypress Academy	
Kramer, Julie	5-2	Sr.	Uvalde, Texas (Baylor Univ. / Uvalde HS)	Acrotex Gymnastics	
Mantle, Mary	5-4	Sr.	Ft. Collins, Colo. (Rocky Mountain HS)	GK Gymnastics	
Neubauer, Bethany	5-2	Fr.	Edmond, Okla. (Edmond North HS)	Dynamo Gymnastics	
Nowak, Kayla	5-2	Fr.	Algonquin, Ill. (Huntley HS)	Illinois Gymnastics Institute	no-VAK
Olson, Brie	5-2	Fr.	St. Cloud, Minn. (Rocori HS)	Ultimate Gymnastics	BREE
Ramaswami, Nitya	5-4	Fr.	Ames, Iowa (Ames HS)	Success Gymnastics	knih-t-YUH ROM-uh-swam-ee
Ratcliff, Natalie	5-5	Jr.	Overland Park, Kan. (Blue Valley Northwest HS)	GAGE	
Root, Melanie	5-3	Jr.	Cartersville, Ga. (Cartersville HS)	Cartersville Twisters	
Smith, Kristin	5-3	Sr.	Oklahoma City, Okla. (Putnam City HS)	Dynamo Gymnastics	
Stone, Sara	5-4	So.	Dallas, Texas (Spring Creek Academy)	Metroplex Gymnastics	
Vise, Hollie	5-5	Sr.	Dallas, Texas (Spring Creek Academy)	WOGA	VICE

COACHING STAFF

K.J. Kindler – Head Coach (Fourth Year) | Lou Ball – Assistant Coach (Fourth Year) | Tom Haley – Assistant Coach (Fourth Year)



CANDACE **CINDELL**



MEGAN **FERGUSON**



JACKIE **FLANERY**



NATASHA **KELLEY**



JULIE **KRAMER**



MARY **MANTLE**



BETHANY **NEUBAUER**



KAYLA **NOWAK**



BRIE **OLSON**



NITYA **RAMASWAMI**



NATALIE **RATCLIFF**



MELANIE **ROOT**



KRISTIN **SMITH**



SARA **STONE**



HOLLIE **VISE**

GYMNAST TO WATCH:

KAYLA NOWAK



The Algonquin, Ill., freshman returns to her home state for the first time in collegiate competition on Saturday against the Fighting Illini.

Nowak has been a regular in the Oklahoma lineup from the onset, competing on bars, beam and floor in both meets this season.

Nowak posted a 9.85 in her first collegiate floor routine in OU's season opener against Florida and tied for second on the apparatus.

CURRENT RANKINGS:

RANK	TEAM	AVERAGE	HIGH
1	UCLA	196.362	196.600
2	OKLAHOMA	196.275	196.300
3	Alabama^	195.962	196.275
4	Florida^	195.925	196.575
5	Oregon State	195.875	196.125
6	Utah	195.712	196.300
7	Arkansas^	195.662	195.925
8	Stanford	195.537	196.025
9	Nebraska^	195.450	195.700
10	Georgia	195.325	195.500
11	Auburn^	195.262	195.325
12	Kentucky	195.187	195.525
13	Missouri^	195.175	195.625
14	Denver	195.112	195.575
15	Michigan	194.875	194.875
16	LSU	194.862	195.350
17	Iowa State^	194.325	195.350
18	Boise State	194.200	194.200
19	Michigan State^	194.175	194.425
20	Washington	194.162	194.875
21	Southern Utah	194.100	194.100
22	Penn State	194.025	194.150
23	N.C. State	193.825	193.825
24	Arizona	193.662	194.675
25	Illinois^	193.112	193.375

^ — Denotes OU's regular season opponents.

The Sooners face 10 squads ranked in the preseason top-25 coaches poll, including three ranked in the top 10.

GYMINFO RANKING SCHEDULE:

Through Feb. 8, the teams are ranked by total season average. Beginning Feb. 15, the ranking is done by Regional Qualifying Score which consists of a team's three highest road scores and the next three highest scores. The high score is subtracted from the six event totals and the remaining amount is divided by five.)

All-Time Series | OU leads 6-0

DATE	LOCATION	RESULT	OU	ILL	MARGIN
2009	NCAA Champ.	W	195.825	195.050	+0.775
2008	NCAA Regional	W	195.875	195.425	+0.450
1999	NCAA Regional	W	193.225	193.100	+0.125
1989	Norman, Okla.	W	190.025	186.600	+3.425
1989	Norman, Okla.	W	188.450	186.400	+2.025
1982	Columbia, Mo.	W	129.450	128.100	+1.350

ROTATION SCHEDULE

Rotation	Vault	Bars	Beam	Floor
1	Illinois	OKLAHOMA		
2	OKLAHOMA	Illinois		
3			Illinois	OKLAHOMA
4			OKLAHOMA	Illinois

CLOSER LOOK AT ILLINOIS

A 2009 NCAA Championships qualifier for the first time in program history, Illinois is currently ranked No. 25 in the latest Troester rankings. The Fighting Illini have been solid on vault, posting a season average of 48.687 on the apparatus, which ranks 20th in the country. Illinois is led by all-arounder Allison Buckley, who posted a 39.275 in the all-around in Illinois' second-place finish at Nebraska on Jan. 15.

CONSISTENCY

Oklahoma has hit 47-of-48 routines on the year, including stellar performances on bars and beam, where the Sooners are currently ranked first in the country on each apparatus. OU's season average on the uneven bars is a 49.200, while the beam squad has posted a mark of 49.025. OU is a perfect 24-of-24 on these two events heading into the third week of competition.

RACKING UP THE TITLES

The Sooners have collected 14 of a possible 16 combined individual and team event titles in 2010. OU swept all four team event honors at Auburn, a week after winning team titles on every event but vault against No. 4 Florida. OU's lone loss in the individual event standings was on vault against Auburn.

REGULAR SEASON SENSATIONS

Oklahoma is 43-6 in the regular season under K.J. Kindler. The Sooners went 10-4 during the regular season in 2009, with three of those losses coming on the road (Florida, Nebraska and Alabama).

DAZZLING DEBUT

Fifteen of Oklahoma's 48 routines this season have been performed by freshmen (.313), including exactly half of OU's uneven bars routines (six of 12). Each freshman that has competed has scored at least a 9.8 in one of their routines, while Natasha Kelley has already tallied a pair of 9.85s.

"ON" THE ROAD AGAIN

The Sooners seek some of the same road success in 2010 that they have exhibited in recent years. Five of OU's top seven scores (including a season-high 197.175 at TWU) came away from Norman in 2009, a year after five of Oklahoma's top seven scores (including three of the top four and a season-best-tying 196.750 at Arkansas) came on the road. Oklahoma was the only squad in the top 10 to have both of its top two scores from 2009 come in road competition. OU's 197.175-189.600 victory at TWU last season marked its best team score since Jan. 24, 2004 (197.300).

NO "I" IN TEAM

OU has found a way to win lately despite the lack of a true all-around presence. Oklahoma did not have an all-arounder compete against Florida or Auburn, while the Sooners were the only squad ranked in the final 2009 top-15 GymInfo poll without a gymnast in the top-25 all-around rankings.

IN ELITE COMPANY

The Sooners are one of just six squads to advance to the NCAA Championships every year since 2004, joining Alabama, Florida, Georgia, LSU and Utah on that elite list. OU's six championship appearances in the last six years matches the other three Big 12 programs combined during that period. Nebraska advanced to the NCAA Championships from 2004-07, while Iowa State made back-to-back appearances in 2005 and 2006 under K.J. Kindler.

QUICK FACTS:

GENERAL INFORMATION

Location	Norman, Okla.
Enrollment	30,092
Founded	1890
President	David L. Boren
VP/Athletics Director	Joe Castiglione
Nickname	Sooners
Colors	Crimson & Cream
Conference	Big 12
Arena	Lloyd Noble Center
Capacity	12,000

TEAM INFORMATION

2009 Overall Record	19-14
2009 High Score	197.175 (@TWU — 1.17.2009)
Big 12 Finish	First
NCAA Finish	10th
Letterwinners Returning/Lost	10/4
All-Americans Returning/Lost	1/0

COACHING STAFF

Head Coach	K.J. Kindler
Year	Fourth Season
Alma Mater	Iowa State, 1992
Record at OU	65-33-2
Career Record	123-59-3
Assistant Coach	Lou Ball
Year	Fourth Season
Alma Mater	Iowa State, 1999
Assistant Coach	Tom Haley
Year	Fourth Season

Women's Gymnastics Office Phone	(405) 325-6876
Women's Gymnastics Office Fax	(405) 325-8337

MARCH-IN ORDER:

NAME	HEIGHT	YEAR	HOMETOWN
Neubauer, Bethany	5-2	Fr.	Edmond, Okla.
Nowak, Kayla	5-2	Fr.	Algonquin, Ill.
Olson, Brie	5-2	Fr.	St. Cloud, Minn.
Ramaswami, Nitya	5-4	Fr.	Ames, Iowa
Kelley, Natasha	5-4	R-Fr.	Katy, Texas
Ferguson, Megan	4-11	So.	Olathe, Kan.
Stone, Sara	5-4	So.	Dallas, Texas
Cindell, Candace	5-5	Jr.	Frisco, Texas
Ratcliff, Natalie	5-5	Jr.	Overland Park, Kan.
Root, Melanie	5-3	Jr.	Cartersville, Ga.
Flanery, Jacqueline	5-5	Sr.	Plattsburg, Mo.
Kramer, Julie	5-2	Sr.	Uvalde, Texas
Mantle, Mary	5-4	Sr.	Ft. Collins, Colo.
Smith, Kristin	5-3	Sr.	Oklahoma City, Okla.
Vise, Hollie	5-5	Sr.	Dallas, Texas

WISE "FLOORS" CROWD IN SEASON OPENER

Strictly a bars and beam specialist during her first three seasons in Norman, Hollie Vise performed her first collegiate routine on floor against the Gators. The Dallas, Texas, native scored a 9.825 on the apparatus, OU's third-highest score on the event in the season opener.

FAMILIAR FACES

Oklahoma's meeting with Auburn on Jan. 15, marked the 18th time the Sooners have faced a team from the state of Alabama since 2003. AU and OU have squared off on three occasions since '03, while Oklahoma has faced Alabama, the other collegiate squad from the Yellowhammer State, 15 times during that period.

SEC FAMILIARITY

OU will face four teams from the Southeastern Conference during the regular season, including two straight to begin the 2010 season. The Sooners have already defeated top-10 foes in Florida and Auburn. Oklahoma faces Alabama in Norman on March 5, in the eighth meeting between the two programs over the last four seasons, before travelling to Arkansas on March 19.

SOONERS AGAINST THE SEC

Oklahoma is 6-18 against teams from the Southeastern Conference under fourth-year head coach K.J. Kindler. That figure is skewed slightly as 17 of the 23 meetings have come in NCAA postseason competition against the upper echelon of the SEC. The Sooners are 3-4 against SEC foes in the regular season, with wins over Auburn (2010), Florida (2010) and Arkansas (2008).

HOME SWEET HOME

The Sooners are 23-2 in Norman under fourth-year head coach K.J. Kindler. OU's only two losses at home have come against SEC opponents in Alabama and Arkansas. Top-seeded Alabama knocked off the Sooners en route to the NCAA South Central Regional title in 2008, while OU's loss to Arkansas in the 2009 home opener marked Oklahoma's only regular season home defeat in Kindler's tenure.

Among the 55 home wins since 2000 are notable victories over Auburn, Georgia, Florida, Illinois, Iowa State, Missouri, Nebraska, Penn State, Stanford and West Virginia.

TWO TOP COACHES

OU's season opener featured two recent recipients of the National Association of Collegiate Gymnastics Coaches (NACGC) Coach of the Year award. K.J. Kindler received the accolade in 2005 while at Iowa State, while Florida's Rhonda Faehn was named the national coach of the year in 2007.

CLOSER LOOK AT OKLAHOMA IN 2010

The back-to-back Big 12 Champions opened the 2010 season ranked ninth in the GymInfo preseason coaches poll, the highest ranking of any conference squad. The Sooners return 11 members from last season's group that clinched OU's second straight conference title.

Headlining OU's returnees is sophomore All-American Megan Ferguson. The Olathe, Kan., native capped off her stellar freshman campaign by garnering All-America status on beam at the 2009 NCAA Championships. She became the first freshman in Big 12 history to win multiple event titles at the conference championship (bars and beam).

Other returnees include All-Big 12 selections in Jackie Flanery (floor - 2008), Melanie Root (vault - 2009), Kristin Smith (floor - 2009) and Hollie Vise (bars - 2008, beam - 2008, 2009). The quartet has combined for nine Big 12 Event Specialist of the Week honors in the past two seasons.

Also returning in 2010 are event title winners Mary Mantle (Big 12 Event Specialist of the Week on Feb. 12, 2008, after her vault win at Denver) and Sara Stone (three vault titles in 2009).

This season also marks the final send-off for Julie Kramer, while other returnees include juniors Candace Cindell and Natalie Ratcliff. Ratcliff was a mainstay in the vault and beam lineup a year ago.

OU gymnastics fans also will have their first chance to see Oklahoma's freshman class of Bethany Neubauer, Kayla Nowak, Brie Olson and Nitya Ramaswami. The class was ranked No. 9 in the country by CollegeGymFans.com.



K.J. KINDLER
Head Coach | Fourth Season

COACHING EXPERIENCE

- Head Coach (Oklahoma, 2006-Present)
- Head Coach (Iowa State, 2001-2006)
- Assistant Coach (Iowa State, 1992-2001)

CAREER COACHING HIGHLIGHTS

- Coached Oklahoma to sixth straight NCAA Championships appearance in 2009
- Guided freshman Megan Ferguson to All-America status on beam in 2009
- Led three gymnasts to individual event titles at 2009 Big 12 Championship
- Positioned the Sooners in the top 10 on all four events in 2009 in final RQS standings
- Clinched back-to-back Big 12 titles in 2008 and 2009
- Led OU to program-best eighth place finish at 2007 and '08 NAAs
- Named 2008 Big 12 Coach of the Year
- Only squad to post undefeated regular season in 2008 (18-0)
- Oklahoma gymnasts earned four All-America honors in 2008
- Guided Sooners to four event titles at 2008 Big 12 Championship
- Led OU to four individual event crowns at '08 Big 12 Championship
- Coached 2008 Big 12 Gymnast of the Year Kiara Redmond
- Led Iowa State to the program's first Super Six in 2006
- Won 2006 Big 12 Championship with Iowa State
- Produced three All-Americans in three seasons (2000, 2005, 2006)
- 2004 and 2006 NCAA Regional Coach of the Year
- Four-time Big 12 Coach of the Year (2004, 2005, 2006, 2008)
- 2005 NACGCW Coach of the Year
- Coached nine NCAA Regional event champions
- Qualified 11 gymnasts for the NCAA individual championships
- Coached 25 Big 12 champions (including three all-arounders)

FOLLOWING THE SOONERS

The OU gymnastics program maintains its own Facebook, YouTube and Twitter accounts, which are updated frequently with all of the latest news about the squad. Links to each of those pages can be found at www.SoonerSports.com, the official site of the Oklahoma Sooners.

KINDLER TABS THREE TO 2011 CLASS

Head Coach K.J. Kindler announced the signing of three gymnasts to National Letters of Intent on Nov. 11, the first day of the early signing period. All hailing from the Lone Star state, the trio of Lauren Alexander (Plano, Texas), Hope Bruce (Denton, Texas) and Taylor Spears (Plano, Texas) will cross the Red River to join the Sooners next fall.

Bruce is a Junior International Elite qualifier, while Alexander and Spears both excelled at JO Nationals prior to signing with the Sooners.

PRACTICE MAKES PERFECT

If the old adage rings true, the Sooners should be on top of their game in 2010 as the team recently moved into of the top training gyms in the entire country. OU recently completed a state-of-the-art 7,000 square foot addition and a complete overhaul of the existing Sam Viersen Gymnastics Center for the men's and women's gymnastics squads.

Funded entirely by private donations without the use of any state or university appropriated funds, the project included a complete renovation of the current gym, locker rooms, sports medicine training rooms and the awards recognition room. A new storage area, a reconfiguration of foam and resi pits and an outdoor patio also highlighted the renovation.

STELLAR YEAR IN THE CLASSROOM

Nine OU gymnasts earned 2009 NACGC All-Academic Scholar awards as the Sooners posted their highest GPA since 2004. Oklahoma's nine honorees was third best among teams advancing to last year's NCAA Championship, behind only Alabama (13) and Stanford (10).

2010 HIGHS

NAME	VAULT	BARS	BEAM	FLOOR	All-AROUND
Candace Cindell	-	-	-	-	-
Megan Ferguson	-	9.825	9.875	9.825	-
Jackie Flanery	9.8	9.85	-	9.875	-
Natasha Kelley	-	9.85	9.8	-	-
Julie Kramer	-	-	-	-	-
Mary Mantle	9.85	-	-	9.775	-
Bethany Neubauer	9.8	-	-	-	-
Kayla Nowak	-	9.8	9.7	9.85	-
Brie Olson	9.775	9.8	-	-	-
Nitya Ramaswami	-	-	-	-	-
Natalie Ratcliff	9.85	-	9.675	-	-
Melanie Root	9.7	-	-	-	-
Kristin Smith	-	-	9.775	9.825	-
Sara Stone	9.825	-	-	-	-
Hollie Vise	-	9.925	9.9	9.825	-

CAREER HIGHS

VAULT	BARS	BEAM	FLOOR	All-AROUND
-	-	-	-	-
-	9.9	9.925	9.85	-
9.85	9.85	-	9.9	-
-	9.85	9.8	-	-
-	-	-	-	-
9.9	9.825	-	9.8	-
9.8	-	-	-	-
-	9.8	9.7	9.85	-
9.775	9.8	-	-	-
-	-	-	-	-
9.85	-	9.875	-	-
9.9	9.875	-	9.75	-
-	-	9.925	9.9	-
9.9	-	-	9.825	-
-	9.925	9.95	9.825	-

SEASON BESTS (INDIVIDUAL)

EVENT	SCORE	GYMNAST	DATE
All-Around	-	-	-
Vault	9.85	Ratcliff	1.15
Bars	9.925	Vise	1.15
Beam	9.9	Vise	1.8
Floor	9.875	Flanery	1.8

SEASON BESTS (TEAM)

EVENT	SCORE	OPPONENT	DATE
Team	196.300	Auburn	1.15
Vault	49.050	Auburn	1.15
Bars	49.225	Auburn	1.15
Beam	49.025	Auburn	1.15
Floor	49.100	Florida	1.8

PROGRAM BESTS (INDIVIDUAL)

EVENT	SCORE	GYMNAST	YEAR
All-Around	39.7	Kasie Tamayo	2004
Vault	10.00	Kiara Redmond	2008
Bars	10.00	Erin LaBarr	2005
Beam	10.00	Kasie Tamayo	2002
Floor	10.00	Patricia Aoki	2003

PROGRAM BESTS (TEAM)

EVENT	SCORE	OPPONENT	YEAR
Team	197.725	Arizona	2003
Vault	49.575	Iowa State	2002
Bars	49.550	Arizona	2003
Beam	49.675	Arizona	2003
Floor	49.675	TWU/Centenary	2003

2010 ACCOLADES

Jackie Flanery Big 12 Event Specialist of the Week 1.12

2010 SCORING BREAKDOWN

DATE	MEET	TEAM	TEAM SCORE	VAULT	BARS	BEAM	FLOOR	RANK
1/8	Florida	OU	196.250	48.950	49.175	49.025	49.100	9
		UF	195.275	49.300	48.175	48.875	48.925	4
1/15	@Auburn	OU	196.300	49.050	49.225	49.025	49.000	2
		AU	195.325	48.975	48.950	48.600	48.800	9

RECORD 2-0 HOME: 1-0 AWAY: 1-0 NEUTRAL: 0-0 BIG 12: 0-0
VS. THE TOP 25: 2-0 VS. THE TOP 10: 2-0

2010 OKLAHOMA TEAM SUPERLATIVES

TEAM SCORE

1. 196.300.....@ No. 9 Auburn (Jan. 15)
2. 196.250..... vs. No. 4 Florida (Jan. 8)

VAULT

1. 49.050.....@ No. 9 Auburn (Jan. 15)
2. 48.950..... vs. No. 4 Florida (Jan. 8)

BARS

1. 49.225.....@ No. 9 Auburn (Jan. 15)
2. 49.175..... vs. No. 4 Florida (Jan. 8)

BEAM

1. 49.025.....@ No. 9 Auburn (Jan. 15)
- 49.025..... vs. No. 4 Florida (Jan. 8)

FLOOR

1. 49.100..... vs. No. 4 Florida (Jan. 8)
2. 49.000.....@ No. 9 Auburn (Jan. 15)

2010 OKLAHOMA INDIVIDUAL SUPERLATIVES

ALL-AROUND

1. N/A.....

VAULT

1. 9.850..... Mary Mantle
9.850..... Natalie Ratcliff
3. 9.825..... Sara Stone
4. 9.800..... Jackie Flanery (2)
9.800..... Bethany Neubauer
9.800..... Mary Mantle

BARS

1. 9.925..... Hollie Vise
2. 9.850..... Jackie Flanery
9.850..... Natasha Kelley (2)
9.850..... Hollie Vise
4. 9.825..... Megan Ferguson (2)
9.825..... Jackie Flanery

BEAM

1. 9.900..... Hollie Vise
2. 9.875..... Megan Ferguson (2)
9.875..... Hollie Vise
3. 9.800..... Natasha Kelley
4. 9.775..... Kristin Smith
9.775..... Natasha Kelley

FLOOR

1. 9.875..... Jackie Flanery
2. 9.850..... Jackie Flanery
9.850..... Kayla Nowak
3. 9.825..... Hollie Vise
9.825..... Megan Ferguson
9.825..... Kristin Smith

2010 OKLAHOMA MEET-BY-MEET LINEUP

FLA	AUB	ILL	METRO	NEB	ISU	MIZZ	MSU	ALA	WASH	ARK	BIG 12
VAULT	VAULT	VAULT	VAULT	VAULT	VAULT	VAULT	VAULT	VAULT	VAULT	VAULT	VAULT
Flanery	Flanery										
Stone	Root										
Olson	Olson										
Neubauer	Stone										
Ratcliff	Ratcliff										
Mantle	Mantle										
BARS	BARS	BARS	BARS	BARS	BARS	BARS	BARS	BARS	BARS	BARS	BARS
Flanery	Flanery										
Olson	Olson										
Nowak	Nowak										
Ferguson	Ferguson										
Kelley	Kelley										
Vise	Vise										
BEAM	BEAM	BEAM	BEAM	BEAM	BEAM	BEAM	BEAM	BEAM	BEAM	BEAM	BEAM
Ratcliff	Ratcliff										
Nowak	Nowak										
Kelley	Kelley										
Ferguson	Ferguson										
Vise	Vise										
Smith	Smith										
FLOOR	FLOOR	FLOOR	FLOOR	FLOOR	FLOOR	FLOOR	FLOOR	FLOOR	FLOOR	FLOOR	FLOOR
Mantle	Mantle										
Ferguson	Ferguson										
Vise	Vise										
Nowak	Nowak										
Smith	Smith										
Flanery	Flanery										

2010 EVENT WINS (TEAM)

EVENT	SCORE	OPPONENT	DATE
Vault (1)	49.050	Auburn	1.15
Bars (2)	49.225	Auburn	1.15
	49.175	Florida	1.8
Beam (2)	49.025	Auburn	1.15
	49.025	Florida	1.8
Floor (2)	49.000	Auburn	1.15
	49.100	Florida	1.8

2010 EVENT WINS (INDIVIDUAL)

NAME (SEASON WINS)	EVENT	OPPONENT
Hollie Vise (4)	Bars	Auburn
		Florida
	Beam	Auburn
		Florida
Jackie Flanery (3)	Bars	Florida
	Floor	Auburn
		Florida
Megan Ferguson (1)	Beam	Auburn
Natasha Kelley (1)	Bars	Florida

WEEK-BY-WEEK RANKINGS

Week	Rank
Preseason	9
Jan. 11	2
Jan. 18	2
Jan. 25	-
Feb. 1	-
Feb. 8	-
Feb. 15	-
Feb. 22	-
March 1	-
March 8	-
March 15	-
March 22	-
March 29	-
April 5	-
April 12	-
Final	-

MEET-BY-MEET LEADERS

FLORIDA - 1.9.2010 | NORMAN

EVENT	SCORE	GYMNAST
All-Around	-	-
Vault	9.85	Mantle
Bars	9.85	Flanery, Kelley, Vise
Beam	9.9	Vise
Floor	9.875	Flanery

@AUBURN - 1.15

EVENT	SCORE	GYMNAST
All-Around	-	-
Vault	9.85	Ratcliff
Bars	9.925	Vise
Beam	9.875	Vise, Ferguson
Floor	9.85	Flanery

@ILLINOIS - 1.23

EVENT	SCORE	GYMNAST
All-Around	-	-
Vault	-	-
Bars	-	-
Beam	-	-
Floor	-	-

@METROPLEX CHALLENGE - 1.30

EVENT	SCORE	GYMNAST
All-Around	-	-
Vault	-	-
Bars	-	-
Beam	-	-
Floor	-	-

NEBRASKA/TWU - 2.5

EVENT	SCORE	GYMNAST
All-Around	-	-
Vault	-	-
Bars	-	-
Beam	-	-
Floor	-	-

IOWA STATE - 2.12

EVENT	SCORE	GYMNAST
All-Around	-	-
Vault	-	-
Bars	-	-
Beam	-	-
Floor	-	-

@MISSOURI - 2.19

EVENT	SCORE	GYMNAST
All-Around	-	-
Vault	-	-
Bars	-	-
Beam	-	-
Floor	-	-

@MICHIGAN STATE - 2.26

EVENT	SCORE	GYMNAST
All-Around	-	-
Vault	-	-
Bars	-	-
Beam	-	-
Floor	-	-

ALABAMA - 3.5

EVENT	SCORE	GYMNAST
All-Around	-	-
Vault	-	-
Bars	-	-
Beam	-	-
Floor	-	-

WASHINGTON - 3.12

EVENT	SCORE	GYMNAST
All-Around	-	-
Vault	-	-
Bars	-	-
Beam	-	-
Floor	-	-

@ARKANSAS - 3.19

EVENT	SCORE	GYMNAST
All-Around	-	-
Vault	-	-
Bars	-	-
Beam	-	-
Floor	-	-

@BIG 12 CHAMPIONSHIP - 3.27

EVENT	SCORE	GYMNAST
All-Around	-	-
Vault	-	-
Bars	-	-
Beam	-	-
Floor	-	-

@NCAA REGIONAL - 4.10

EVENT	SCORE	GYMNAST
All-Around	-	-
Vault	-	-
Bars	-	-
Beam	-	-
Floor	-	-



CAREER HIGHS

VT	UB	BB	FX
-	-	-	-

SEASON HIGHS

VT	UB	BB	FX
-	-	-	-

CANDACE CINDELL

Date	Event	Vault	Bars	Beam	Floor	AA
1.08	Florida	-	-	-	-	-
1.15	@Auburn	-	-	-	-	-
1.23	@Illinois	-	-	-	-	-
1.30	Metroplex Challenge	-	-	-	-	-
2.05	Nebraska/TWU	-	-	-	-	-
2.12	Iowa State	-	-	-	-	-
2.19	@Missouri	-	-	-	-	-
2.26	@Michigan State	-	-	-	-	-
3.05	Alabama	-	-	-	-	-
3.12	Washington	-	-	-	-	-
3.19	@Arkansas	-	-	-	-	-
3.27	Big 12 Championship	-	-	-	-	-
4.10	NCAA Regional	-	-	-	-	-



CAREER HIGHS

VT	UB	BB	FX
-	9.9	9.925	9.85

SEASON HIGHS

VT	UB	BB	FX
-	9.825	9.875	9.825

MEGAN FERGUSON

Date	Event	Vault	Bars	Beam	Floor	AA
1.08	Florida	-	9.825	9.875	9.775	-
1.15	@Auburn	-	9.825	9.875	9.825	-
1.23	@Illinois	-	-	-	-	-
1.30	Metroplex Challenge	-	-	-	-	-
2.05	Nebraska/TWU	-	-	-	-	-
2.12	Iowa State	-	-	-	-	-
2.19	@Missouri	-	-	-	-	-
2.26	@Michigan State	-	-	-	-	-
3.05	Alabama	-	-	-	-	-
3.12	Washington	-	-	-	-	-
3.19	@Arkansas	-	-	-	-	-
3.27	Big 12 Championship	-	-	-	-	-
4.10	NCAA Regional	-	-	-	-	-



CAREER HIGHS

VT	UB	BB	FX
9.85	9.85	-	9.9

SEASON HIGHS

VT	UB	BB	FX
9.8	9.85	-	9.875

JACKIE FLANERY

Date	Event	Vault	Bars	Beam	Floor	AA
1.08	Florida	9.800	9.850	-	9.875	-
1.15	@Auburn	9.800	9.825	-	9.850	-
1.23	@Illinois	-	-	-	-	-
1.30	Metroplex Challenge	-	-	-	-	-
2.05	Nebraska/TWU	-	-	-	-	-
2.12	Iowa State	-	-	-	-	-
2.19	@Missouri	-	-	-	-	-
2.26	@Michigan State	-	-	-	-	-
3.05	Alabama	-	-	-	-	-
3.12	Washington	-	-	-	-	-
3.19	@Arkansas	-	-	-	-	-
3.27	Big 12 Championship	-	-	-	-	-
4.10	NCAA Regional	-	-	-	-	-



CAREER HIGHS

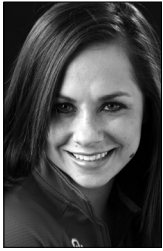
VT	UB	BB	FX
-	9.85	9.85	-

SEASON HIGHS

VT	UB	BB	FX
-	9.85	9.85	-

NATASHA KELLEY

Date	Event	Vault	Bars	Beam	Floor	AA
1.08	Florida	-	9.850	9.800	-	-
1.15	@Auburn	-	9.850	9.775	-	-
1.23	@Illinois	-	-	-	-	-
1.30	Metroplex Challenge	-	-	-	-	-
2.05	Nebraska/TWU	-	-	-	-	-
2.12	Iowa State	-	-	-	-	-
2.19	@Missouri	-	-	-	-	-
2.26	@Michigan State	-	-	-	-	-
3.05	Alabama	-	-	-	-	-
3.12	Washington	-	-	-	-	-
3.19	@Arkansas	-	-	-	-	-
3.27	Big 12 Championship	-	-	-	-	-
4.10	NCAA Regional	-	-	-	-	-



CAREER HIGHS

VT	UB	BB	FX
-	-	-	-

SEASON HIGHS

VT	UB	BB	FX
-	-	-	-

JULIE KRAMER

Date	Event	Vault	Bars	Beam	Floor	AA
1.08	Florida	-	-	-	-	-
1.15	@Auburn	-	-	-	-	-
1.23	@Illinois	-	-	-	-	-
1.30	Metroplex Challenge	-	-	-	-	-
2.05	Nebraska/TWU	-	-	-	-	-
2.12	Iowa State	-	-	-	-	-
2.19	@Missouri	-	-	-	-	-
2.26	@Michigan State	-	-	-	-	-
3.05	Alabama	-	-	-	-	-
3.12	Washington	-	-	-	-	-
3.19	@Arkansas	-	-	-	-	-
3.27	Big 12 Championship	-	-	-	-	-
4.10	NCAA Regional	-	-	-	-	-



CAREER HIGHS

VT	UB	BB	FX
9.9	9.825	-	9.8

SEASON HIGHS

VT	UB	BB	FX
9.85	-	-	9.775

MARY MANTLE

Date	Event	Vault	Bars	Beam	Floor	AA
1.08	Florida	9.850	-	-	9.775	-
1.15	@Auburn	9.800	-	-	9.750	-
1.23	@Illinois	-	-	-	-	-
1.30	Metroplex Challenge	-	-	-	-	-
2.05	Nebraska/TWU	-	-	-	-	-
2.12	Iowa State	-	-	-	-	-
2.19	@Missouri	-	-	-	-	-
2.26	@Michigan State	-	-	-	-	-
3.05	Alabama	-	-	-	-	-
3.12	Washington	-	-	-	-	-
3.19	@Arkansas	-	-	-	-	-
3.27	Big 12 Championship	-	-	-	-	-
4.10	NCAA Regional	-	-	-	-	-



CAREER HIGHS

VT	UB	BB	FX
9.8	-	-	-

SEASON HIGHS

VT	UB	BB	FX
9.8	-	-	-

BETHANY NEUBAUER

Date	Event	Vault	Bars	Beam	Floor	AA
1.08	Florida	9.800	-	-	-	-
1.15	@Auburn	-	-	-	-	-
1.23	@Illinois	-	-	-	-	-
1.30	Metroplex Challenge	-	-	-	-	-
2.05	Nebraska/TWU	-	-	-	-	-
2.12	Iowa State	-	-	-	-	-
2.19	@Missouri	-	-	-	-	-
2.26	@Michigan State	-	-	-	-	-
3.05	Alabama	-	-	-	-	-
3.12	Washington	-	-	-	-	-
3.19	@Arkansas	-	-	-	-	-
3.27	Big 12 Championship	-	-	-	-	-
4.10	NCAA Regional	-	-	-	-	-



CAREER HIGHS

VT	UB	BB	FX
-	9.8	9.7	9.85

SEASON HIGHS

VT	UB	BB	FX
-	9.8	9.7	9.85

KAYLA NOWAK

Date	Event	Vault	Bars	Beam	Floor	AA
1.08	Florida	-	9.775	9.700	9.850	-
1.15	@Auburn	-	9.800	9.625	9.750	-
1.23	@Illinois	-	-	-	-	-
1.30	Metroplex Challenge	-	-	-	-	-
2.05	Nebraska/TWU	-	-	-	-	-
2.12	Iowa State	-	-	-	-	-
2.19	@Missouri	-	-	-	-	-
2.26	@Michigan State	-	-	-	-	-
3.05	Alabama	-	-	-	-	-
3.12	Washington	-	-	-	-	-
3.19	@Arkansas	-	-	-	-	-
3.27	Big 12 Championship	-	-	-	-	-
4.10	NCAA Regional	-	-	-	-	-



CAREER HIGHS

VT	UB	BB	FX
9.775	9.8	-	-

SEASON HIGHS

VT	UB	BB	FX
9.775	9.8	-	-

BRIË OLSON

Date	Event	Vault	Bars	Beam	Floor	AA
1.08	Florida	9.750	9.800	-	-	-
1.15	@Auburn	9.775	9.800	-	-	-
1.23	@Illinois	-	-	-	-	-
1.30	Metroplex Challenge	-	-	-	-	-
2.05	Nebraska/TWU	-	-	-	-	-
2.12	Iowa State	-	-	-	-	-
2.19	@Missouri	-	-	-	-	-
2.26	@Michigan State	-	-	-	-	-
3.05	Alabama	-	-	-	-	-
3.12	Washington	-	-	-	-	-
3.19	@Arkansas	-	-	-	-	-
3.27	Big 12 Championship	-	-	-	-	-
4.10	NCAA Regional	-	-	-	-	-



CAREER HIGHS

VT	UB	BB	FX
-	-	-	-

SEASON HIGHS

VT	UB	BB	FX
-	-	-	-

NITYA RAMASWAMI

Date	Event	Vault	Bars	Beam	Floor	AA
1.08	Florida	-	-	-	-	-
1.15	@Auburn	-	-	-	-	-
1.23	@Illinois	-	-	-	-	-
1.30	Metroplex Challenge	-	-	-	-	-
2.05	Nebraska/TWU	-	-	-	-	-
2.12	Iowa State	-	-	-	-	-
2.19	@Missouri	-	-	-	-	-
2.26	@Michigan State	-	-	-	-	-
3.05	Alabama	-	-	-	-	-
3.12	Washington	-	-	-	-	-
3.19	@Arkansas	-	-	-	-	-
3.27	Big 12 Championship	-	-	-	-	-
4.10	NCAA Regional	-	-	-	-	-



CAREER HIGHS

VT	UB	BB	FX
9.85	-	9.875	-

SEASON HIGHS

VT	UB	BB	FX
9.85	-	9.725	-

NATALIE RATCLIFF

Date	Event	Vault	Bars	Beam	Floor	AA
1.08	Florida	9.750	-	9.675	-	-
1.15	@Auburn	9.850	-	9.725	-	-
1.23	@Illinois	-	-	-	-	-
1.30	Metroplex Challenge	-	-	-	-	-
2.05	Nebraska/TWU	-	-	-	-	-
2.12	Iowa State	-	-	-	-	-
2.19	@Missouri	-	-	-	-	-
2.26	@Michigan State	-	-	-	-	-
3.05	Alabama	-	-	-	-	-
3.12	Washington	-	-	-	-	-
3.19	@Arkansas	-	-	-	-	-
3.27	Big 12 Championship	-	-	-	-	-
4.10	NCAA Regional	-	-	-	-	-



CAREER HIGHS

VT	UB	BB	FX
9.9	9.875	-	9.75

SEASON HIGHS

VT	UB	BB	FX
9.7	-	-	-

MELANIE ROOT

Date	Event	Vault	Bars	Beam	Floor	AA
1.08	Florida	-	-	-	-	-
1.15	@Auburn	9.700	-	-	-	-
1.23	@Illinois	-	-	-	-	-
1.30	Metroplex Challenge	-	-	-	-	-
2.05	Nebraska/TWU	-	-	-	-	-
2.12	Iowa State	-	-	-	-	-
2.19	@Missouri	-	-	-	-	-
2.26	@Michigan State	-	-	-	-	-
3.05	Alabama	-	-	-	-	-
3.12	Washington	-	-	-	-	-
3.19	@Arkansas	-	-	-	-	-
3.27	Big 12 Championship	-	-	-	-	-
4.10	NCAA Regional	-	-	-	-	-



CAREER HIGHS

VT	UB	BB	FX
-	-	9.925	9.9

SEASON HIGHS

VT	UB	BB	FX
-	-	9.775	9.825

KRISTIN SMITH

Date	Event	Vault	Bars	Beam	Floor	AA
1.08	Florida	-	-	9.750	9.275	-
1.15	@Auburn	-	-	9.775	9.825	-
1.23	@Illinois	-	-	-	-	-
1.30	Metroplex Challenge	-	-	-	-	-
2.05	Nebraska/TWU	-	-	-	-	-
2.12	Iowa State	-	-	-	-	-
2.19	@Missouri	-	-	-	-	-
2.26	@Michigan State	-	-	-	-	-
3.05	Alabama	-	-	-	-	-
3.12	Washington	-	-	-	-	-
3.19	@Arkansas	-	-	-	-	-
3.27	Big 12 Championship	-	-	-	-	-
4.10	NCAA Regional	-	-	-	-	-



CAREER HIGHS

VT	UB	BB	FX
9.9	-	-	9.825

SEASON HIGHS

VT	UB	BB	FX
9.825	-	-	-

SARA STONE

Date	Event	Vault	Bars	Beam	Floor	AA
1.08	Florida	9.700	-	-	-	-
1.15	@Auburn	9.825	-	-	-	-
1.23	@Illinois	-	-	-	-	-
1.30	Metroplex Challenge	-	-	-	-	-
2.05	Nebraska/TWU	-	-	-	-	-
2.12	Iowa State	-	-	-	-	-
2.19	@Missouri	-	-	-	-	-
2.26	@Michigan State	-	-	-	-	-
3.05	Alabama	-	-	-	-	-
3.12	Washington	-	-	-	-	-
3.19	@Arkansas	-	-	-	-	-
3.27	Big 12 Championship	-	-	-	-	-
4.10	NCAA Regional	-	-	-	-	-



CAREER HIGHS

VT	UB	BB	FX
-	9.925	9.95	9.825

SEASON HIGHS

VT	UB	BB	FX
-	9.925	9.9	9.825

HOLLIE VISE

Date	Event	Vault	Bars	Beam	Floor	AA
1.08	Florida	-	9.850	9.900	9.825	-
1.15	@Auburn	-	9.925	9.875	9.700	-
1.23	@Illinois	-	-	-	-	-
1.30	Metroplex Challenge	-	-	-	-	-
2.05	Nebraska/TWU	-	-	-	-	-
2.12	Iowa State	-	-	-	-	-
2.19	@Missouri	-	-	-	-	-
2.26	@Michigan State	-	-	-	-	-
3.05	Alabama	-	-	-	-	-
3.12	Washington	-	-	-	-	-
3.19	@Arkansas	-	-	-	-	-
3.27	Big 12 Championship	-	-	-	-	-
4.10	NCAA Regional	-	-	-	-	-

2010 MEET-BY-MEET RECAPS

WEEK 1 - FLORIDA | JAN. 8, 2010

NORMAN, Okla. -- The No. 9 Oklahoma women's gymnastics squad led wire-to-wire in a 196.250-195.275 upset over fourth-ranked Florida in the Sooners' season opener on Friday in front of 1,325 fans at Lloyd Noble Center.

The victory over the Gators marked the highest-ranked opponent that OU has toppled under fourth-year head coach K.J. Kindler.

The Sooners improved to 23-2 in home meets under Kindler behind strong performances from veterans and newcomers alike, as Oklahoma picked up event titles on bars, beam and floor. OU also claimed individual event titles on each of those events as well, as Jackie Flanery (bars and floor), Hollie Vise (bars and beam) and Natasha Kelley (bars) claimed individual honors.

"This team (OU) came out with a whole other confidence that I've never seen before," said Kindler. "They didn't waiver when the door was opening, they didn't hesitate and they jumped in feet first. I was really impressed with that more than anything. They had a lot of confidence tonight."

OU opened the meet with a 48.950 on vault, paced by Mary Mantle's 9.85 from the anchor position. Mantle placed third in the individual standings on the apparatus, behind a pair of 9.875s from UF's Ashanee Dickerson and Maranda Smith. Flanery posted a 9.8 from the first spot, while freshman Bethany Neubauer matched Flanery's score in her first collegiate routine. Oklahoma took the early lead as Florida was forced to count a fall on bars (48.175).

The Sooners increased their lead to 98.125-97.425 through two rotations after a stellar bars set that resulted in the team event title. Flanery, Kelley and Vise all scored 9.85s to sweep the individual event honors for OU. Flanery's bar set marked a career best, while Kelley competed despite suffering a complete ACL tear less than two months ago. Reigning Big 12 bars co-champion Megan Ferguson tallied a 9.825, while Brie Olson scored a 9.8 in her collegiate debut.

Vise picked up her second individual victory of the night on beam (9.9), leading Oklahoma to its second event win of the evening. OU outscored the Gators 49.025-48.875 on the apparatus, as Ferguson (9.875) and Kelley (9.8) both posted solid routines.

The Sooners sealed the meet victory with an event-winning floor score of 49.100 - their third straight score of 49.000-plus on the night. Flanery picked up her second event title of the night (9.875), freshman Kayla Nowak (9.85) shared second in her debut, while Vise scored a 9.825 in her first collegiate routine on the apparatus.

"We hit 23-of-24 routines which is phenomenal for your first competition," said Kindler. "Now, there are always things we can do to improve, but I thought overall it was an excellent first meet. The freshmen and Natasha were phenomenal. They hit eight routines, out of eight, and were some of our highest scores. They definitely brought a level of confidence to our team.

Oklahoma improved to 42-6 in the regular season under Kindler.

V A U L T	1	Jackie Flanery	102	9.80	9.80				9.800
	2	Sara Stone	113	9.70	9.70				9.700
	3	Brie Olson	108	9.75	9.75				9.750
	4	Bethany Neubauer	106	9.75	9.85				9.800
	5	Natalie Ratcliff	110	9.75	9.75				9.750
	6	Mary Mantle	105	9.85	9.85				9.850

Vault Score: 48.950 Running Score: 48.950

B A R S	1	Jackie Flanery	102	9.85	9.85				9.850
	2	Brie Olson	108	9.80	9.80				9.800
	3	Kayla Nowak	107	9.80	9.75				9.775
	4	Megan Ferguson	101	9.85	9.80				9.825
	5	Natasha Kelley	103	9.90	9.80				9.850
	6	Hollie Vise	114	9.85	9.85				9.850

Bars Score: 49.175 Running Score: 98.125

B E A M	1	Natalie Ratcliff	110	9.70	9.65				9.675
	2	Kayla Nowak	107	9.65	9.75				9.700
	3	Natasha Kelley	103	9.85	9.75				9.800
	4	Megan Ferguson	101	9.90	9.85				9.875
	5	Hollie Vise	114	9.85	9.95				9.900
	6	Kristin Smith	112	9.80	9.70				9.750

Beam Score: 49.025 Running Score: 147.150

F L O O R	1	Mary Mantle	105	9.80	9.75				9.775
	2	Megan Ferguson	101	9.75	9.80				9.775
	3	Hollie Vise	114	9.85	9.80				9.825
	4	Kayla Nowak	107	9.85	9.85				9.850
	5	Kristin Smith	112	9.25	9.30				9.275
	6	Jackie Flanery	102	9.90	9.85				9.875

Floor Score: 49.100 Running Score: 196.250

Final Team Score: **196.250**

All-Arounders

VT									
UB									
BB									
FX									
AA									

